

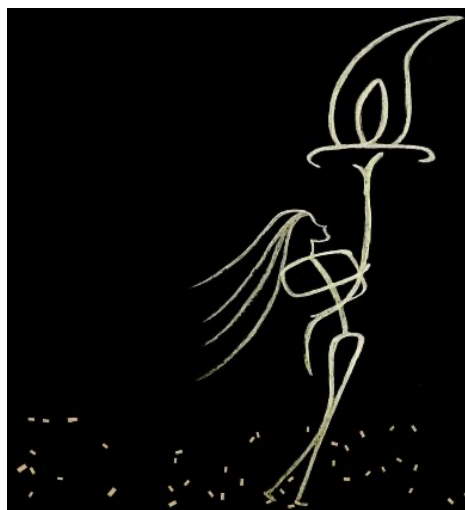


**AJFO | MEMBER NEWSLETTER – MAY 2022**

## **Knowledge, Community, and Inclusion**

Our values of knowledge, community, and inclusion are threaded through this highlighted resource. There are contributions from women personally impacted by the justice system, advocates for reform and reentry services, elected women leaders, public health officials, and more.

### **The New Jersey Reentry Corporation and NJ’s Commission on Reentry Services for Women**



[\*The Journal of Women and Criminal Justice Winter 2021 Edition\*](#) is a must read. A must view! *The Journal* provides a platform for justice-involved persons and advocates and this edition asked artists and writers across the country to explore the broad, overarching issue of mass incarceration: “What does it look like? How does it feel, both to justice-involved and to justice-impacted people? What are the causes and effects of mass incarceration, as demonstrated by research and lived experience?”

Research and statistics, essays, drawings, and poetry are combined in one powerful document.



***"The greatness of a community is most accurately measured by the compassionate actions of its members.***

**- Coretta Scott King**

# Member Spotlight

Meet SIMONE SAWYER, CAIST™/JAIS™ PROGRAM ASSOCIATE  
Evident Change, a nonprofit that uses data and research to improve our social systems.

Simone has experience in outreach and engagement and as juvenile supervision officer in a trauma-informed juvenile detention facility. Check out her recent blog, [Finding Balance in Supervision](#): "I've always believed that the purpose of the justice system is to protect, serve, and deliver justice for all. As a community member, I have felt the benefit of police protection, but—as a Black woman and a former public servant—I have seen the other side that's not so pretty..."



## Regional Updates



▶ **Northeast** – Incarcerated women and high school students attended class together in [Maine](#).



▶ **Midwest** – Virtual probation hearings supported rural counties in [Southeast Nebraska](#) during the pandemic.



▶ **Western** – The Empowerment Program will run Project Elevate, a trauma-informed halfway house for personally impacted incarcerated women leaving prison, slated to open in mid-May in Denver, [Colorado](#).



▶ **Southern** – A previously incarcerated woman continues to ease the transition for other women ending their prison sentences at Oak Cottage for Women in [Tennessee](#).



▶ **International** - The internationally renowned Red Cross prison safety program launches in [Tasmania](#).

# Coffee & Community

An AJFO Podcast

## Episode 5: Dana Hartsfield

In our fifth episode of the Coffee & Community Podcast, we sat down with Dana Hartsfield and heard about her personal journey to recovery and her work teaching substance abuse classes to women in the criminal justice system. Her story is truly amazing, and she is truly a model of resilience and perseverance.



## Volunteer Opportunities

Are you interested in serving as a regional chairperson? Regional chairpeople would be responsible for:

- moderating the discussions in the online regional group,
- helping to post thought-provoking questions and conversations topics for the group,
- providing a brief update for this quarterly newsletter that share recent highlights in your region, and/or
- sharing regional events and helping to schedule webinars.

Please contact our [Navigator](#) for more information!

## Headlines

[Women's Storybook Project Of Texas is connecting incarcerated mothers with their children through the joy of literature](#)

[How Anti-Prostitution and Sex Trafficking Laws Victimize People of Color](#)

[In prison, having your period can put your life in danger](#)

[Being a Better Parent While Incarcerated: B'More Reconnects](#)

[Multnomah County Board of Commissioners proclaim April 2022 as Second Chance Month](#)

['Art with a heart' to support women leaving prison](#)



Website:  
[ajfo.org](http://ajfo.org)



Member Community:  
[community.ajfo.org](http://community.ajfo.org)



Email:  
[info@ajfo.org](mailto:info@ajfo.org)



# “The Collaborative”

“The Collaborative” started as a shared vision of what a small community in Southern Oregon could do with a mostly empty building coming up on its lease. The Oregon Department of Human Services (Self-Sufficiency & Child Welfare), had been using the space for admin services and it was larger than what they needed and they were open to ideas of collaboration. Together with the Pathfinder Network and Jackson County Community Justice a magical idea began forming. Initially referenced as the Unicorn Center, because only magic could get this beast off the ground. With funding from local foundations and the Oregon Health Plan CCO’s, The Collaborative took shape. The Collaborative is a trauma-informed space that provides gender responsive services to women and gender diverse justice involved individuals and was created to remove barriers and increase access to holistic and integrated services.



These combined efforts will address the impacts of trauma, decreased social isolation for impacted community members, support SUD recovery, employ community wide approaches to reducing harm associated with behavioral health issues, and ensure access and coordination of care.

Upon entering The Collaborative, some of the feelings described were calmness, gratitude, hopeful, excited, thoughtful, comfortable, warm, and inspired. Peer support specialists from The Pathfinder Network will support participants in their engagement with parole/probation and DHS with trauma, gender, and culturally responsive supports in a space intentionally created to promote best practices. Co-locating DHS and parole/probation service provision will support cross system collaboration, navigation of systems, and a holistic approach.

The intended outcomes of this investment are to establish a trauma, gender, and culturally responsive space for collaborative and transformational service provisions, increase the number of community members served through wrap around and drop-in services, and increase resilience and behavioral health recovery capital of those receiving wrap around services.

The space includes a living room as the lobby when peers will meet participants offer tea or coffee and any services they might need. Additionally, the gender responsive probation unit will be housed on site and provide supervision and services to those on their caseloads. It has a group room with a kid friendly plan area and multiple spaces for quiet 1x1 meetings with peers, PO’s or Child Welfare workers. The Collaborative idea was born in October of 2021 and is due to open its doors and begin providing services May 16,2022! Truly a unicorn to take flight, melding County, State and non-profit services.